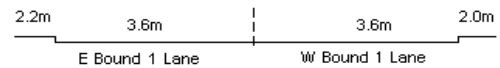
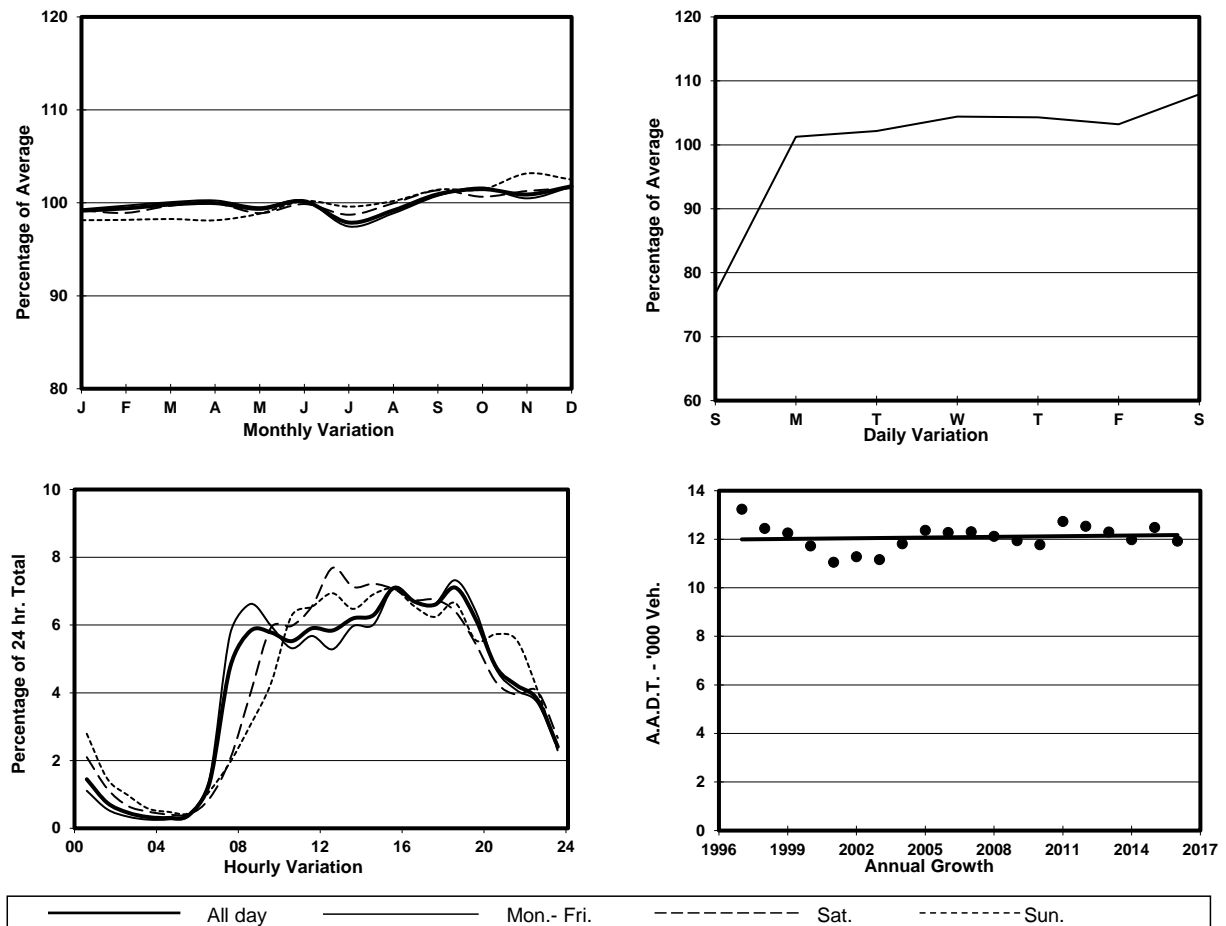


YEAR 2016  
 COVERAGE (B) STATION 2204  
 ROAD NETWORK MAJOR  
 ROAD TYPE DISTRICT DISTRIBUTOR

LINK YEE KING RD & LAI TAK TSUEN RD (from CLOUD VIEW RD to TAI HANG RD)



## 1. TRAFFIC FLOW VARIATION AND GROWTH



## 2. TRAFFIC CHARACTERISTICS (BY DIRECTION)

Parameter	All - Day	Mon. - Fri.	Sat.	Sun.
<b>EAST BOUND</b>				
A.A.D.T.	7000	7310	7390	5690
R 12 / 24 - %	71.8	72.4	72.1	67.1
R 16 / 24 - %	92	92.7	90.1	89.5
AM Peak Hour	0800-0900	0800-0900	0900-1000	0900-1000
One-way flow at AM peak hour	380	440	420	260
T - % (AM)	-	7.4	-	-
PM Peak Hour	1800-1900	1800-1900	1700-1800	1600-1700
One-way flow at PM peak hour	500	540	490	380
T - % (PM)	-	8.1	-	-
Prop.of commercial vehicles - 16 hr.	-	8.8	-	-
<b>WEST BOUND</b>				
A.A.D.T.	4920	5140	5640	3560
R 12 / 24 - %	76.3	77.1	75.2	71.9
R 16 / 24 - %	93.3	93.9	92.6	90.5
AM Peak Hour	0900-1000	0800-0900	0900-1000	0900-1000
One-way flow at AM peak hour	320	390	360	140
T - % (AM)	-	17.1	-	-
PM Peak Hour	1800-1900	1800-1900	1600-1700	1800-1900
One-way flow at PM peak hour	350	370	400	270
T - % (PM)	-	3.9	-	-
Prop.of commercial vehicles - 16 hr.	-	7.9	-	-

## 3. OTHER INFORMATION AND COMMENT

**Coverage (B) Station 2204**  
**Year 2016**

**4. Vehicle classification and occupancy - Monday to Friday**

Time		Class of vehicle									
		Motor	Private	Taxi	Private	PLB	Goods veh.		Non	Fr. Bus	
		Cycle	Car		LB		Light	M & H	Fr. Bus	SD	DD
0700-0800	Pro	3.1	41.1	17.5	8.2	11.3	1.0	0.0	10.3	2.3	5.1
	Ocp	1.3	1.7	1.6	4.6	12.0	1.0	0.0	13.6	26.8	19.8
0800-0900	Pro	1.4	65.0	11.9	2.3	4.1	2.7	0.9	7.3	1.9	2.4
	Ocp	1.0	1.5	2.1	5.2	14.3	2.0	2.0	9.9	11.4	14.7
0900-1000	Pro	0.5	65.1	11.8	3.3	4.2	8.5	0.9	1.4	1.5	2.7
	Ocp	1.0	1.4	1.7	2.6	13.1	1.7	2.0	7.7	8.0	8.5
1000-1100	Pro	1.8	58.5	16.6	1.2	6.2	8.0	0.6	3.1	1.5	2.5
	Ocp	1.0	1.5	1.6	3.0	7.3	2.1	3.0	1.0	11.9	13.2
1100-1200	Pro	1.3	50.2	22.7	2.7	4.7	12.0	0.0	2.0	2.0	2.3
	Ocp	1.0	1.5	1.9	6.0	10.0	1.4	0.0	13.0	14.1	11.8
1200-1300	Pro	1.4	54.4	16.7	11.2	3.5	4.9	0.7	3.5	1.2	2.6
	Ocp	1.0	1.4	1.9	5.8	11.4	2.0	3.0	27.0	19.1	14.5
1300-1400	Pro	0.0	53.0	24.1	1.2	7.8	6.0	0.6	3.0	1.8	2.4
	Ocp	0.0	1.5	1.9	3.5	8.5	2.3	1.0	7.0	8.4	11.8
1400-1500	Pro	0.0	60.9	18.9	3.0	2.4	5.3	0.0	5.9	1.5	2.1
	Ocp	0.0	1.4	1.9	1.6	16.0	1.7	0.0	1.9	12.8	8.9
1500-1600	Pro	0.5	53.5	25.1	5.6	2.8	3.3	0.0	6.5	1.0	1.7
	Ocp	1.0	1.7	1.9	9.4	14.5	1.9	0.0	20.0	20.3	19.3
1600-1700	Pro	2.3	49.3	22.3	2.3	2.9	7.6	0.0	7.6	1.9	3.7
	Ocp	1.3	1.5	2.2	2.0	16.0	1.6	0.0	4.5	11.8	11.2
1700-1800	Pro	2.2	56.0	26.6	1.1	3.8	2.2	0.0	3.8	1.6	2.7
	Ocp	1.0	1.6	2.0	4.5	14.6	1.8	0.0	5.9	13.7	20.3
1800-1900 Peak hour	Pro	3.7	61.9	23.1	0.5	3.2	1.8	0.0	2.3	1.6	1.8
	Ocp	1.1	1.5	2.0	4.0	14.6	1.8	0.0	4.6	8.6	15.4
1900-2000	Pro	1.3	61.9	28.4	0.0	2.6	0.9	0.4	1.3	1.6	1.5
	Ocp	1.0	1.6	1.8	0.0	11.5	1.0	1.0	21.7	8.1	11.8
2000-2100	Pro	0.6	52.5	35.8	0.0	5.1	0.6	0.0	0.6	1.9	2.7
	Ocp	1.0	1.4	2.0	0.0	6.8	1.0	0.0	12.0	5.3	6.1
2100-2200	Pro	0.8	55.0	30.3	0.0	5.6	1.6	0.0	1.6	2.8	2.4
	Ocp	1.0	1.8	2.1	0.0	9.1	1.0	0.0	10.0	6.4	10.8
2200-2300	Pro	1.8	54.9	30.2	0.0	7.3	0.0	0.0	0.0	3.2	2.5
	Ocp	1.0	1.5	1.9	0.0	5.6	0.0	0.0	0.0	3.2	5.1
16 hours	Pro	1.4	56.8	22.3	2.5	4.5	4.2	0.3	3.7	1.8	2.5
	Ocp	1.1	1.5	1.9	5.2	11.1	1.7	2.0	10.3	11.0	12.9

**Legend**

**Pro.** Proportion of vehicles in % (Sum may not add up to 100% due to figure rounding)\*

**Ocp.** Average occupancy of vehicles including both driver and passengers\*

**M&H** Medium and Heavy

\* All traffic data are collected from combined bounds except for one way traffic